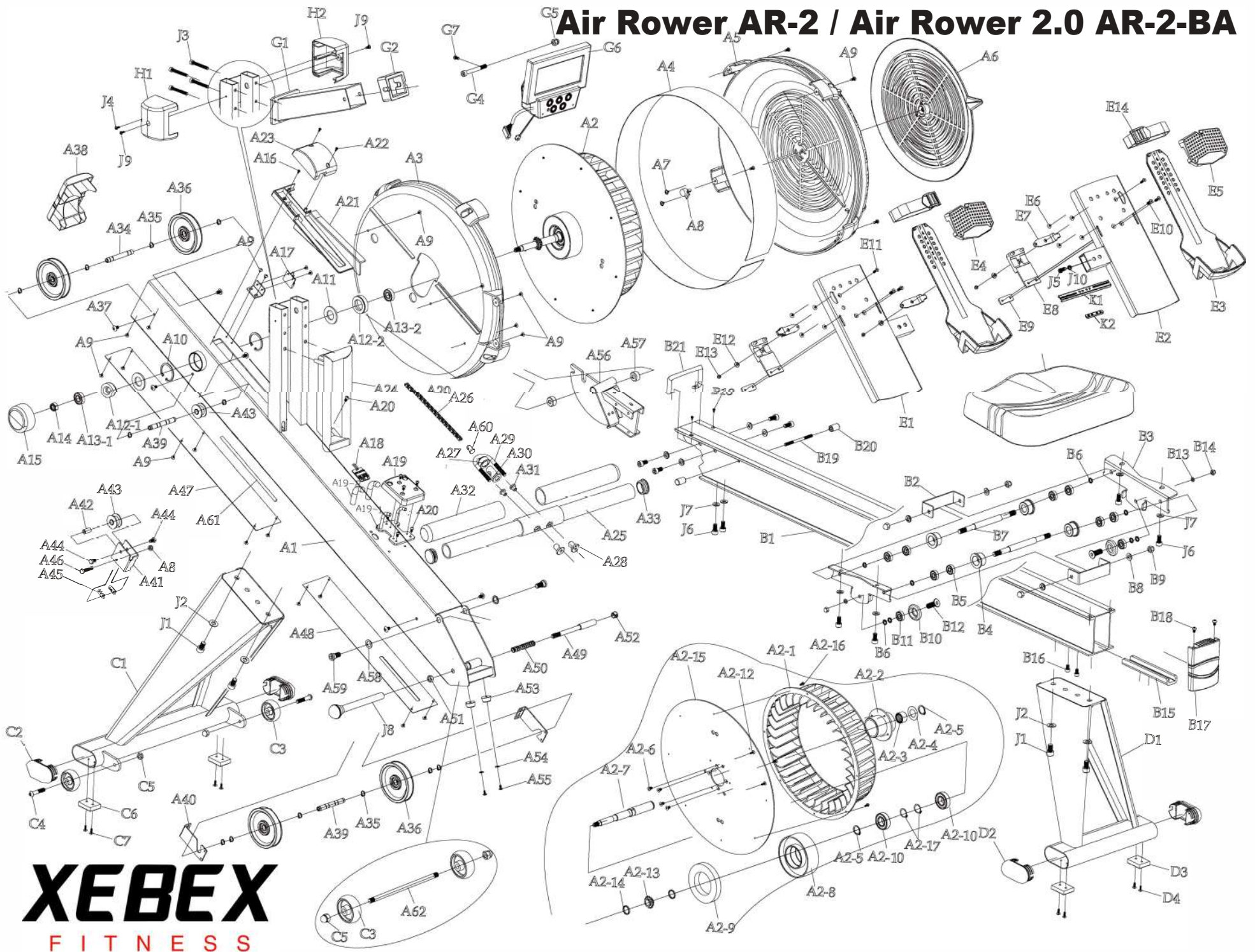


Air Rower AR-2 / Air Rower 2.0 AR-2-BA



XEBEX
FITNESS

NO.	NAME	SPECIFICATION	Q'TY	NO.	NAME	SPECIFICATION	Q'TY
A1	Main Frame Assembly		1	A21	Sensor Base Cover	ABS	1
A2	Flywheel Fan Assembly		1	A22	Ball Head Tapping Screw	M4*12mm	2
A2-1	Fan		1	A23	Sensor Cover	ABS	1
A2-2	Tube		1	A24	Outer Chain Cover	ABS	1
A2-3	One-Way Bearing	FC 2016	1	A25	Handle-bar	Φ31.8	1
A2-4	Iron Washer		1	A26	1/4" Chain		1
A2-5	S-type Buckle	S20	2	A27	Chain Connecting Spacer	SC-2473	1
A2-6	Cap Head Socket Screw	M5*10mm	4	A28	Even Head Nut	Ø18×Ø9(M6)×15mm	2
A2-7	Axial of Flywheel	Φ20*197mm	1	A29	Chain Hook		1
A2-8	Magnet Covering		1	A30	Chain Connector		1
A2-9	Ring Magnet	Φ100*Φ60*15T	1	A31	T-type Nut	Ø14×Ø8(M6)×10.5mm	2
A2-10	Bearing	BR-6004ZZDKFL	2	A32	Hand Grip		2
A2-11	Interval Ring	Old Design	4	A33	End Cap		2
A2-12	Tapping Screw	M4*12mm	6	A34	Axial of Pulley(Front)	Φ10*79.8mm	1
A2-13	1/4" Chain Gear		1	A35	C-Type Buckle		10
A2-14	PU Washer		2	A36	Pulley		4
A2-15	Fan stable Bracket	Φ430*2.5T	1	A37	Philip Head Socket Screw	M5*10mm	4
A2-16	Tapping Screw	M4*10mm	8	A38	Main Frame Front Cap	ABS	1
A2-17	R-type Buckle	R42	2	A39	Axial of Pulley(Back)	Φ10*79.8mm	2
A3	Chain Cover(Left)	ABS	1	A40	Elastic Rope Bracket		2
A4	Mesh		1	A41	Chain Bracket		1
A5	Chain Cover(Right)	ABS	1	A42	Pulley Socket		1
A6	Adjust Disc	ABS	1	A43	Chain Pulley		2
A7	Tapping Screw	M4*8mm	2	A44	Hexagon Head Screw	M6*10mm	2
A8	Nylon Insert Lock Nut	M6	1	A45	Trim Panel		2
A9	Tapping Screw	M4*12mm	21	A46	Hexagon Head Screw	M6*30mm	1
A10	C-Type Buckle	R40	2	A47	Main Frame Bottom Board(Front)		1
A11	Washer	Φ22*Φ44.2*3T	2	A48	Main Frame Bottom Board(Back)		1
A12-1	Rubber Cover	6001	1	A49	Axial of Pin	Φ12.7*76mm	1
A12-2	Rubber Cover	6903	1	A50	Spring		1
A13-1	Bearing	BR-6001ZZDKFL	1	A51	Nut		1
A13-2	Bearing	BR-6903ZZDKFL	1	A52	Plug Block		1
A14	Nylon Insert Lock Nut	M10	1	A53	Foot Pad		1
A15	Ring Cover	ABS	1	A54	Washer	M4*Φ10*1T	2
A16	Screw	M5*6mm	1	A55	Tapping Screw	M4*10mm	2
A17	Sensor		1	A56	Swivel Axial		1
A18	Heart Rate Receiver		1	A57	Swivel Axial Socket	Φ21.5*12mm	2
A19	Handle Holder	ABS	1	A58	Washer	1/2"*2.0T*Φ23	2
A20	Philip Head Socket Screw	M5*10mm	4	A59	Cap Head Socket Screw	M10*16mm	2

NO.	NAME	SPECIFICATION	Q'TY	NO.	NAME	SPECIFICATION	Q'TY
A60	Chain Connecting Axial		1	E1	Left Pedal Rest		1
A61	Elastic Rope		1	E2	Right Pedal Rest		1
A62	Axial of Moving Wheel	Φ8X156mm	1	E3	Adjust Pedal Pad	TPE	2
				E4	Left Pedal Rest Cover		1
B1	Aluminum Rail		1	E5	Right Pedal Rest Cover		1
B2	Seat Carriage Roller Cover		2	E6	Tapping Screw	M4*8mm	8
B3	Seat Carriage Cover		2	E7	Set Piece		2
B4	Seat Carriage Wheel		4	E8	Set Base		2
B5	Bearing	PR-608ZZ(BMC)	8	E9	Foot Snap		2
B6	Spacer	Φ8*Φ12*2mm	8	E10	Flat Head Phillips Screw	M5*15mm	4
B7	Seat Carriage Axial	Φ10*121mm	2	E11	Flat Head Phillips Screw	M4*15mm	2
B8	Washer	M8*2.0T*Φ16	4	E12	Spacer		2
B9	Lower Acorn Nut	M8	4	E13	Nylon Insert Lock Nut	M4	2
B10	Seat Carriage Roller		2	E14	Foot Strap		2
B11	Bearing	PR-608ZZ(BMC)	2				
B12	Even Head Socket Screw	M8*20mm	2	F	Seat		1
B13	Washer	M8*Φ16*2T	2				
B14	Lower Acorn Nut	M8	2	G1	Console Tube		1
B15	Rail Upper Plate		1	G2	Console Bracket		1
B16	Cap Head Socket Screw	M6*10mm	2	G3	Console Back Cover	Old design	1
B17	Rail End Cap	ABS	1	G4	Cap Head Socket Screw	M8*85mm	1
B18	Phillip Head Socket Screw	M5*10mm	4	G5	Nylon Acorn Nut	M8	1
B19	Double Head Screw	Φ5.25*85mm	1	G6	Console		1
B20	Seat Carriage Stopper	TPR	2	G7	Ball Head Screw	M5*10mm	4
B21	Rail Handle		1				
				H1	Left Console Tube Cover	ABS	1
C1	Front Stabilizer		1	H2	Right Console Tube Cover	ABS	1
C2	Flat Oval End Cap	40*80	2	J0	Nylon Insert Lock Nut	M8(old design)	2
C3	Moving Wheel	Φ50	4	J1	Cap Head Socket Screw	M10*16mm	4
C4	Phillip Head Socket Screw	M8*40mm	2	J2	Washer	M10*1.5T*Φ20	4
C5	Lower Acorn Nut	M8	4	J3	Cap Head Socket Screw	M6*50mm	4
C6	Foot Pad	40*32mm	2	J4	Tapping Screw	M4*12mm	3
C7	Tapping Screw	M4*12mm	2	J5	Cap Head Socket Screw	M8*35mm	4
				J6	Cap Head Socket Screw	M8*16mm	10
D1	Rear Stabilizer		1	J7	Washer	M8*Φ16*1.5T	10
D2	Flat Oval End Cap	40*80	2	J8	Pull Pin		1
D3	Foot Pad	40*32mm	2	J9	Ball Head Screw	M4*10mm	2
D4	Tapping Screw	M4*12mm	2	J10	Spring Washer		4
				K1	Pedal Stable Bracket		1
				K2	Screw Thread Base		1