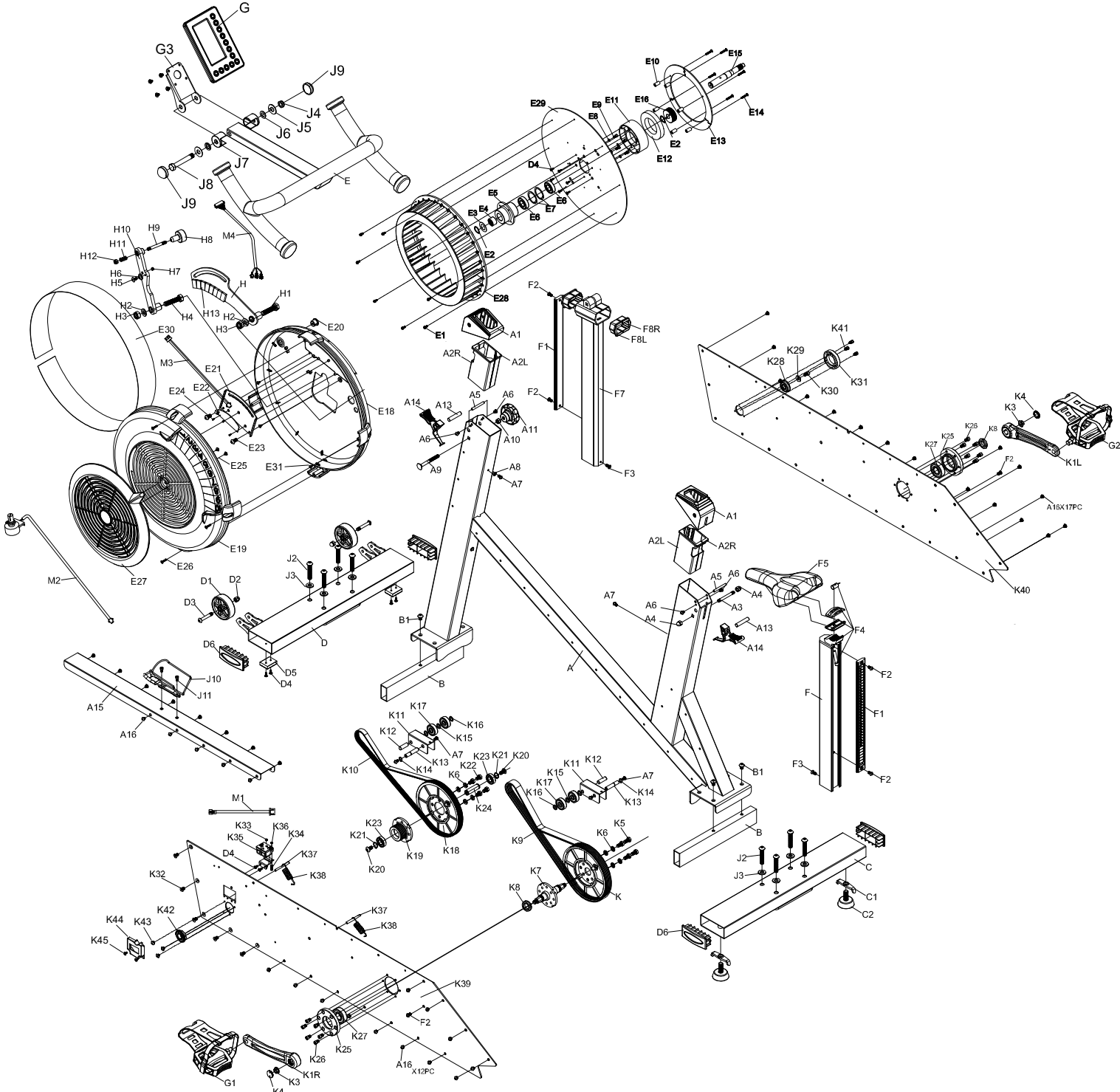


XEBEX

FITNESS

Air Plus Cycle AMSB-03-BA



PARTS LIST

NO.	NAME	SPECIFICATION	Q'TY	NO.	NAME	SPECIFICATION	Q'TY
A	Main Frame		1	E8	Spring Washer	M5	4
A1	Retractable Sleeve		2	E9	Screw	M5×10mm	4
A2L	Square Inner Sleeve-L		2	E10	Aluminum Sleeve		6
A2R	Square Inner Sleeve-R		2	E11	Magnet Base		1
A3	Double-Head Screw	Φ8×65mm	1	E12	Ring Magnet		1
A4	Nut	M8	2	E13	Aluminum Plate		3
A5	Round Steel Rod	Φ6×50mm	2	E14	Screw	M4×25mm	6
A6	Screw	M6×10mm	30	E15	Flywheel Shaft		1
A7	Screw	M6×10mm	6	E16	Drive Belt Pulley- PJ		1
A8	Spring Washer	M6	1				
A9	Screw	M8×80mm	2	E18	Inner Main Cover		1
A10	Nut	M8	2	E19	Outer Main Cover		1
A11	Knob	M8	2	E20	Plug	Φ17	1
A13	Lever Support Column	Φ10×49.5mm	2	E21	Magnetic Resistance Level Shield		1
A14	Lever		2	E22	Reed Switch Board		1
A15	Upper Steel Cover	Stainless steel 0.8T	1	E23	Screw	M8×16mm	2
A16	Screw	M6×6mm	15	E24	Tapping Screw	M2×6mm	3
B	Packaging Tube		2	E25	Tapping Screw	M4×10mm	2
B1	Screw	M8×12mm	4	E26	Tapping Screw	M4×20mm	4
C	Rear Stabilizer		1	E27	Damper Disc Cover		1
C1	Wing Nut	M12	2	E28	Plastic Flywheel Fan		1
C2	Knob		2	E29	Fan Plate		1
D	Front Stabilizer		1	E30	Mesh		1
D1	Transportation Wheel		2	E31	Tapping Screw	M4×10mm	4
D2	Nut	M8	2	F	Saddle Post		1
D3	Screw	M8×50mm	2	F1	Adjuster Plate		2
D4	Tapping Screw	M4×12mm	12	F2	Screw	M6×12mm	6
D5	Square Pad		2	F3	Screw	M6×10mm	2
D6	Tube End Cap	40×100	4	F4	Saddle Set		1
E	Handle Bar Assembly		1	F5	Saddle		1
E1	Screw	M4	8	F7	Handle Bar Post		1
E2	Clip	S20	2	F8L	Handle Bar Post Sleeve-L		2
E3	Steel Washer		2	F8R	Handle Bar Post Sleeve-R		2
E4	One-Way Bearing	FC2016	1	G	Console		1
E5	Flywheel Bearing Holder		1	G3	Console Base		1
E6	Bearing	6004	2				
E7	Clip	R42	2				

PARTS LIST

NO.	NAME	SPECIFICATION	Q'TY	NO.	NAME	SPECIFICATION	Q'TY
H	Magnet Base		1	K12	Idler Pulley Shaft	Φ10×30mm	2
H1	Screw	M8×40mm	1	K13	Idler Pulley Sleeve	Φ10×50mm	2
H2	Spring Washer	M8	2	K14	Clip	S10	2
H3	Nut	M8	2	K15	Flat Washer	Φ10×2T×Φ20	2
H4	Screw		1	K16	Flat Washer	Φ10×1T×Φ20	4
H5	Screw	M4×8mm	1	K17	Bearing	6300	4
H6	Powder metallurgy		1	K18	Drive Belt Disc-PJ	Φ180	1
H7	Magnet	Φ5×3T	1	K19	Drive Belt Pulley-PJ		1
H8	Magnet Control Bar		1	K20	Bolt	M8×16mm	2
H9	Magnet Control Shaft	Φ5×44mm	1	K21	Clip	S15	2
H10	Magnet Control Rod		1	K22	Screw	M8×12mm	4
H11	Spring		1	K23	Bearing	6002	2
H12	Nut	M5	1	K24	Flywheel Bearing Sleeve	Φ15×50mm	1
H13	Magnet	N40	8	K25L	Bearing Holder(L)		1
J2	Bolt	M10×55mm	8	K25R	Bearing Holder(R)		1
J3	Flat Washer	Φ10×2T×Φ18	8	K26	Bolt	M6×10mm	12
J4	Nut	1/2"-13UNC	1	K27	Bearing	6204	2
J5	Flat Washer	1/2"×1T×Φ32	2	K28	Bearing with buckle	6201ZZ	1
J6	Flat Washer	1/2"×2T×Φ23	2	K29	Flat Washer	M6×2T×19	1
J7	Console Pivot Bushing		2	K30	Screw with nylok	M6×12mm	1
J8	Hex Head Screw	1/2"×3 1/4"	1	K31	Bearing Cap		1
J9	Nut Cap		2	K32	Bolt	M6×12mm	5
J10	Bottle Holder (Optional)		1	K33	Nut	M3	2
J11	Screw	M5×10mm	2	K34	Screw	M3×15mm	2
G1	Left Pedal		1	K35	Electromagnet		1
G2	Right Pedal		1	K36	Electromagnet Base		1
K1L	Left Crank		1	K37	Spring Rod	Φ6×56mm	2
K1R	Right Crank		1	K38	Spring		2
K	Drive Belt Disc- PK	Φ180	1	K39	Iron Side Cover-L		1
K3	Nut		2	K40	Iron Side Cover-R		1
K4	Shaft Cap		2	K41	Screw	M5×8mm	3
K5	Screw	M8×16mm	4	K42	Bearing with buckle	BR-6003ZZ.Z3TPX-1	1
K6	Spring Washer	M8	8	K43	Screw	M5×6mm	3
K7	Shaft		1	K44	Airproof Cover		1
K8	Nut	M20	2	K45	Tapping Screw	M4×10mm	2
K9	Drive Belt	1095PK6	1	M1	Generator Wire		1
K10	Drive Belt	430J6	1	M2	VR sensor wire		1
K11	Idler Pulley Bracket		2	M3	Resistance Level Wire		1
				M4	Console Wire		1