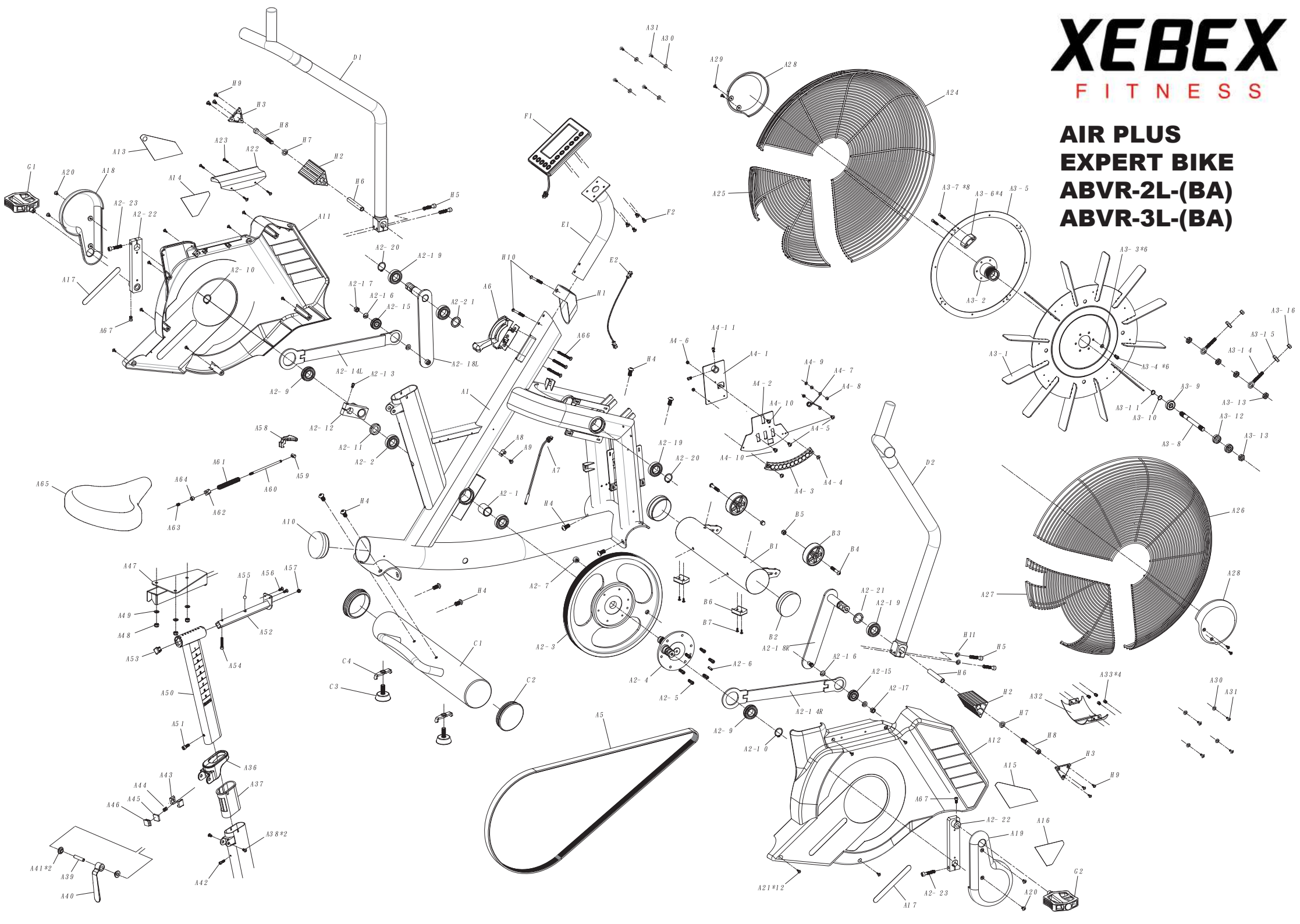


XEBEX

FITNESS

AIR PLUS EXPERT BIKE ABVR-2L-(BA) ABVR-3L-(BA)



P/N	Description	Qty	P/N	Description	Qty
A1	Main Frame	1	A4-3	Magnet Set	1
A2-1	Sleeve	1	A4-4	Screw	2
A2-2	Bearing BR-6005zz	2	A4-5	Screw	2
A2-3	Belt Wheel	1	A4-6	Nut	3
A2-4	Axle	1	A4-7	Spring	1
A2-5	Bolt M6x20mm	6	A4-8	Nylon Nut	2
A2-6	Spring Pin M6x20mm	1	A4-9	Flat Washer	1
A2-7	Magnet	1	A4-10	Screw	2
A2-9	Bearing	2	A4-11	Bolt	2
A2-10	E Clip	2	A5	Belt	1
A2-11	Nut M25	1	A6	Tension Adjust Bar	1
A2-12	Left Crank	1	A7	Sensor	1
A2-13	Bolt M8x40mm	1	A8	Sensor Clip	1
A2-14L	Swing the Connecting Rod L	1	A9	Screw	1
A2-14R	Swing the Connecting Rod R	1	A10	Main Frame End Cap	1
A2-15	Bearing	2	A11	Left Chain Cover	1
A2-16	Spacer Washer	4	A12	Right Chain Cover	1
A2-17	Nut M10	2	A13	Sticker	1
A2-18L	Connecting Rod L	1	A14	Sticker	1
A2-18R	Connecting Rod R	1	A15	Sticker	1
A2-19	Bearing	4	A16	Sticker	1
A2-20	E Clip	2	A17	Sticker	2
			A18	Left Crank Cover	1
A2-22L	Crank L	1	A19	Right Crank Cover	1
A2-22R	Crank R	1	A20	Screw	4
A2-23	Bolt M8x40mm	2	A21	Chain Cover Screw M4x15mm	12
A3-1	Steel Fan Wheel	1	A22	Stainless Cover	1
A3-2	Pulley	1	A23	Tapping Screw M4x25mm	4
A3-3	Spring washer M6	6	A24	Left Steel Line Cover	1
A3-4	Bolt M6x12	6	A25	Left Small Steel Line Cover	1
A3-5	Aluminum Plate	4	A26	Right Steel Line Cover	1
A3-6	Aluminum Pad Seat	4	A27	Right Small Steel Line Cover	1
A3-7	Tapping Screw M4x35mm	8	A28	Iron Net Cover	2
A3-8	Fan Wheel Axle	1	A29	Tapping Screw M4x15mm	4
A3-9	Bearing	1	A30	Flat Washer	8
A3-10	Washer	1	A31	Screw	8
A3-11	Clip	1	A32	Cover	1
A3-12	Bearing	2	A33	Bolt	4
A3-13	Nut M12	4	A36	Seat Post Cover	1
A3-14	Adjust Screw M8	2	A37	Seat Post Sleeve	1
A3-15	Fixing Holder	2	A38	Bolt	2
A3-16	Nylon Nut	2	A39	Sleeve Ø10x43.2mm	1
A4-1	Base Board	1	A40	Fix Grip	1
A4-2	Magnet Base	1	A41	Bushing	2

P/N	Description	Qty	P/N	Description	Qty
A42	Bolt M6x20mm	1	E1	Console Tube	1
A43	Block	2	E2	Console Wire	1
A44	Spring	1			
A45	Gasket	1	F1	Console	1
A46	Plate	1	F2	Screw M5x30mm	4
A47	Saddle Base	1			
A48	Nylon Nut M8	3	G1	Pedal (L)	1
A49	Spring Washer M8	3	G2	Pedal (R)	1
A50	Saddle Post	1			
A51	Bolt M6x12mm	1	H1	Console Tube Cover	1
A52	Saddle Sleeve	1	H2	Aluminum Triangle Tube	2
A53	Square End Cap	1	H3	Triangle Tube End Cap	2
A54	Bolt M6x35mm	1	H4	Bolt M10x20mm	8
A55	Steel Ball	1	H5	Bolt M8x40mm	4
A56	Tapping Screw M6x15mm	2	H6	Sleeve	2
A57	Nylon Nut M6	1	H7	Flat Washer 10x20x1.5t	2
A58	Saddle Adjust Bar	1	H8	Bolt M10x100mm	2
A59	Quick Release Axle	1	H9	Tapping Screw M4x15mm	6
A60	Threaded Rod	1	H10	Bolt M6x50mm	2
A61	Spring	1	H11	M8 Spring Washer for handlebars	4
A62	Spacer Block	1			
A63	Spring	1			
A64	Sleeve Ø8x12.7mm	1			
A65	Saddle	1			
A66	Tapping Screw M5x15mm	3			
A67	Bolt M6x8mm	2			
B1	Front Stabilizer	1			
B2	End Cap	2			
B3	Wheel with spacers	2			
B4	Bolt M8x40mm	2			
B5	Nut M8	2			
B6	Foot Pad	2			
B7	Tapping Screw M4x12mm	4			
C1	Rear Stabilizer	1			
C2	End Cap Ø101.6	2			
C3	Knob	2			
C4	Wing Nut M12	2			
D1	Swing Handlebar(L)	1			
D2	Swing Handlebar(R)	1			